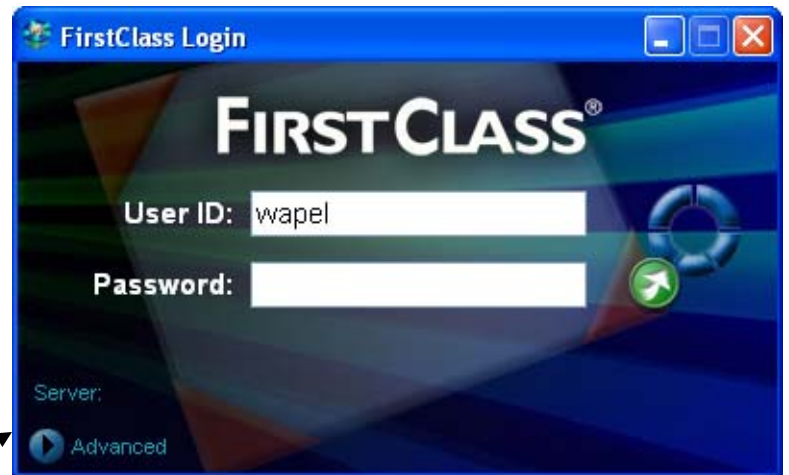
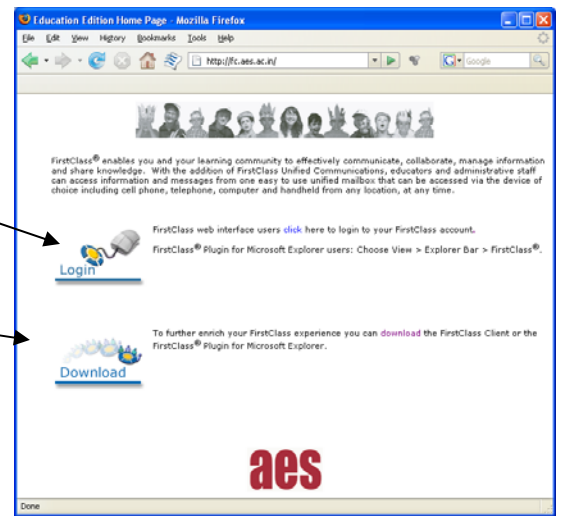


# Connecting to FirstClass at AES

You can always access your AES FirstClass account from the website (<http://fc.aes.ac.in>)

But you'll get more power out of the "Client" which is a program you install on your computer. You can download the most recent version of the FirstClass client software from our website (<http://fc.aes.ac.in>) and install it on your computer. You may need permission from your parents to install programs on your home computer—please ask first.



After it's installed, you'll get a login screen like this:

If this "Server:" field is blank, your computer doesn't know which server to connect to. To fix this, click the round arrow button next to Advanced.

If you get this error:

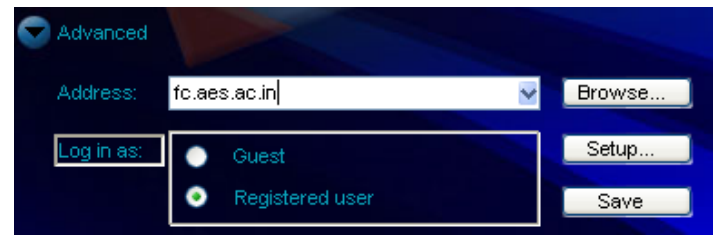


Double check that you are entering your username and password correctly.

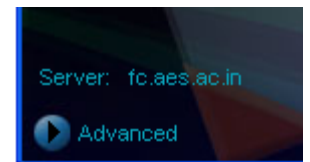
If you get this error:



Double check that your Server setting is `fc.aes.ac.in`



Replace the word "home.fc" with `fc.aes.ac.in` and save. Once you see the screen look like this:



It should work fine.